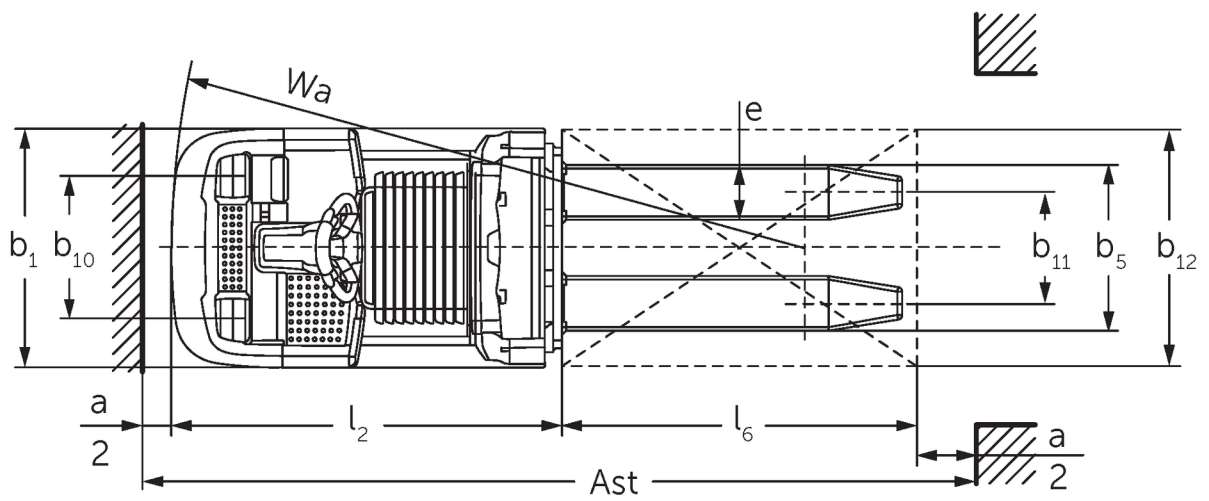
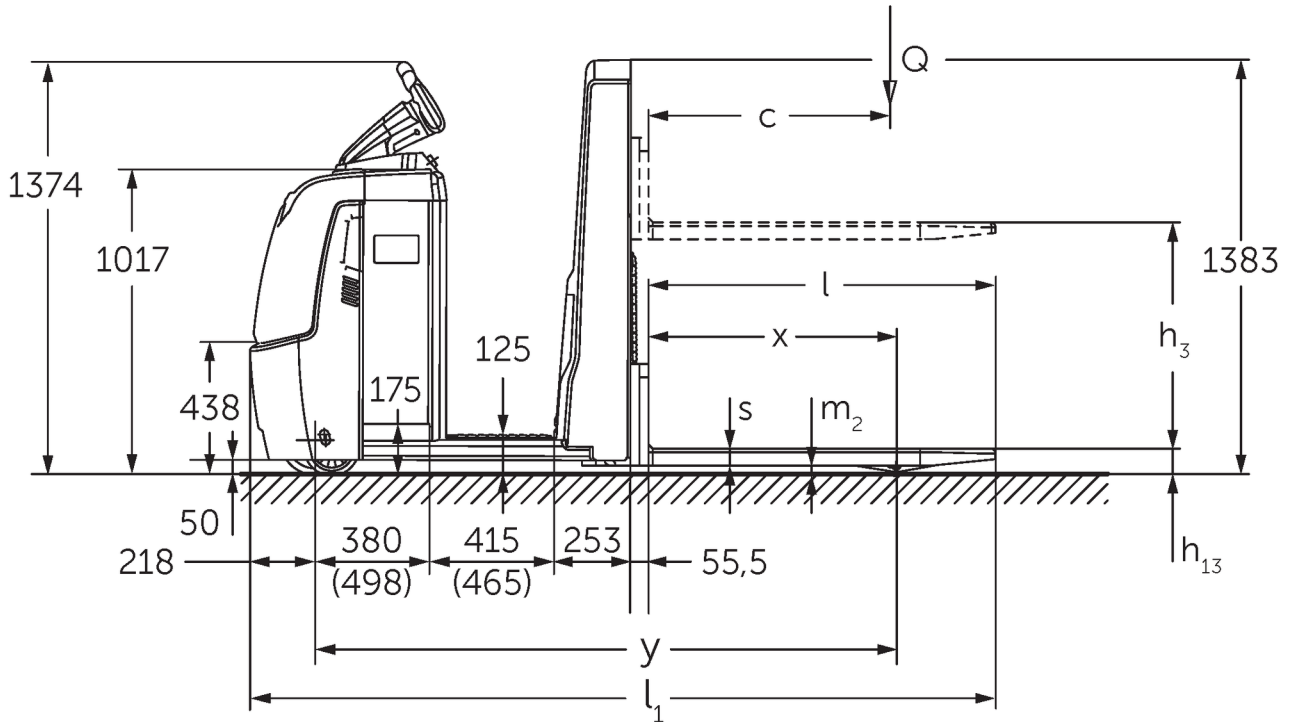




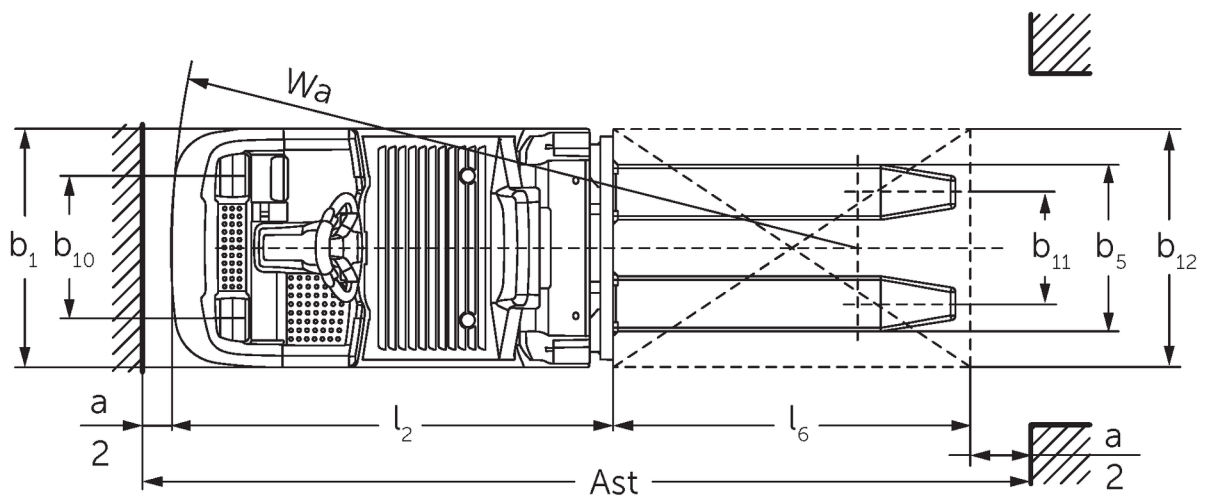
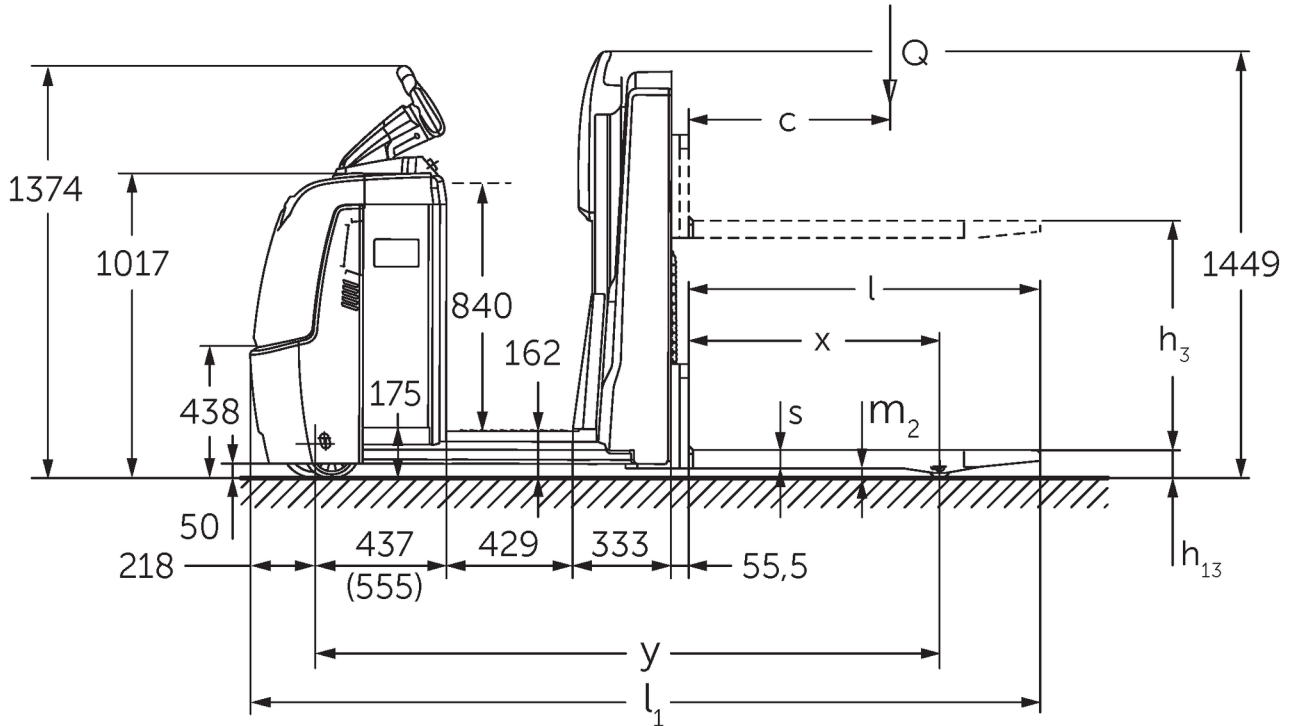
Low level order pickers **ECE 310**

Lift height: 750 mm / Load capacity: 1000 kg

ECE 310



ECE 310



VDI table

Stand-on: 11/2021

				Jungheinrich		
Characteristic	1.1	Manufacturer (abbreviated description)				
	1.2	Manufacturer's type designation		ECE 310	ECE 310 HP	
	1.3	Drive		Electric		
	1.4	Operation		Order pickers		
	1.5	Load capacity/load	Q	kg	1000	
	1.6	Load centre distance	c	mm	600	
	1.8	Load distance, centre of drive axle to fork	x	mm	821	
	1.9	Wheelbase	y	mm	1925	2075
	Weights	2.1.1	Service weight (incl. battery)		kg	1084
2.2		Axle load laden front/rear		kg	839 / 1245	869 / 1405
2.3		Axle load unladen front/rear		kg	772 / 311	862 / 411
Wheels/suspension system	3.1	Tyres		Polyurethane (PU)		
	3.2	Tyre size, front		Ø 230 x 78		
	3.3	Tyre size, rear		Ø 75 x 95		
	3.4	Additional wheels		Ø 180 x 65		
	3.5	Wheels, number front/back (x=driven)		1+1x/2		
	3.6	Tread width, front	b ₁₀	mm	481	
	3.7	Tread width, rear	b ₁₁	mm	339	
	3.7.1	2. Tread width, rear		mm	379	
Basic dimensions	4.4	Lift (h ₃)	h ₃	mm	750	
	4.9	Height of tiller handle in drive position min./max.		mm	1374 / 1418	
	4.15	Height, lowered	h ₁₃	mm	90	
	4.19	Overall length	l ₁	mm	2471	2621
	4.20	Length including fork shank	l ₂	mm	1321	1471
	4.21.1	Overall width	b ₁	mm	810	
	4.22	Fork dimensions	s/e/l	mm	56 x 185 x 1150	
	4.25	Width across forks	b ₅	mm	560	
	4.32	Ground clearance centre of wheelbase	m ₂	mm	30	
	4.34.1	Aisle width (pallet 800x1200 length)	A _{st}	mm	2721	2871
	4.35	Turning radius	W _a	mm	2142	2292
Performance data	5.1	Travel speed laden/unladen (Efficiency drivePLUS)		km/h	9.5 / 12.5 9.5 / 14	
	5.2	Lift speed laden/unladen		m/s	0.17 / 0.33	
	5.3	Lowering speed laden/unladen		m/s	0.19 / 0.19	
	5.8	Max. gradeability laden/unladen (Efficiency drivePLUS)		%	6 / 15 6 / 15	
	5.10	Service brake			generative	
E-motor/Electronics	6.1	Drive motor, performance S2 60 min (Efficiency drivePLUS)		kW	2.8 3.2	
	6.2	Lift motor, performance with S3		kW	1.5	
	6.4	Battery voltage/nominal capacity		V / Ah	24 / 465	
	6.5	Battery weight		kg	370	
	6.6.1	Energy consumption according to EN cycle (Efficiency PLUS)		kWh/h	0.4 0.47	
	6.6.2	CO2 equivalent as per EN 16796 (Efficiency PLUS)		kg/h	0.2 0.3	
	6.7	Throughput (Efficiency PLUS)		t/h	65 68	64 67
	6.8.1	Energy consumption with max. throughput (Efficiency PLUS)		kWh/h	1.27 1.47	1.28 1.47

Other	8.1	Type of drive control		AC
	10.5	Steering version		electric
	10.7	Sound level as per EN12053, operator's ear	dB (A)	62
<p>- This data sheet according to VDI guideline 2198 only states the technical values of the standard truck. Different tyres, other masts, additional equipment etc. may result in different values.</p>				

Efficiency: Werte Standardpaket | PLUS: Werte Leistungspaket

Values for L battery compartment; fork length 1,150 mm.

- VDI no. 1.9: with XL or XL (ERE) battery compartment: $y + 118$ mm; with extended stand-on platform: $y + 50$ mm.
- VDI no. 4.19: with XL or XL (ERE) battery compartment: $l1 + 118$ mm; with extended stand-on platform: $l1 + 50$ mm.
- VDI no. 4.20: with XL or XL (ERE) battery compartment: $l2 + 118$ mm; with extended stand-on platform: $l2 + 50$ mm.
- VDI no. 4.34.1: with XL or XL (ERE) battery compartment: working aisle width (Ast) + 118 mm; with extended stand-on platform: working aisle width (Ast) + 50 mm; diagonal as per VDI: working aisle width (Ast) + 94 mm.
- VDI no. 4.35: with XL or XL (ERE) battery compartment: $Wa + 118$ mm; with extended stand-on platform: $Wa + 50$ mm.
- VDI no. 6.2: with S3 10%.
- VDI no. 6.4: with XL battery compartment: 24 V / 620 Ah.
- VDI no. 6.5: with XL battery compartment: 460 kg.

The German production facilities in
Norderstedt, Moosburg and Landsberg
are certified.

ISO 9001
ISO 14001

Jungheinrich fork lift trucks meet
European safety requirements.



 **JUNGHEINRICH**

The Jungheinrich logo, featuring a red upward-pointing arrow above the word 'JUNGHEINRICH' in a bold, black, sans-serif font.